

# PARQWAY

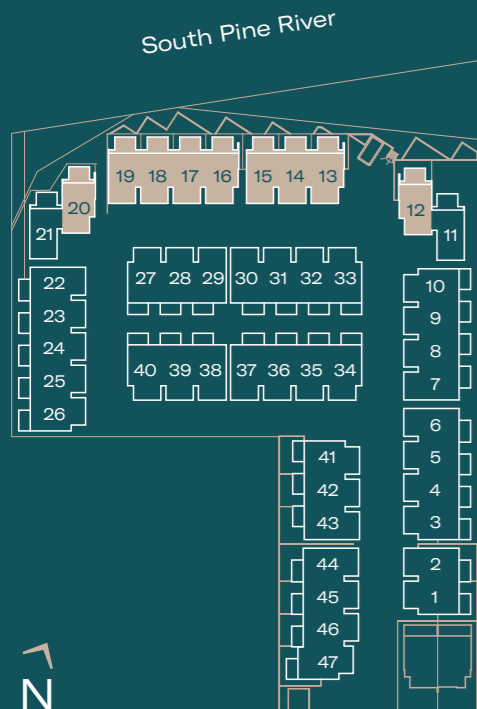
Albany Creek

## RESIDENCE TYPE 02

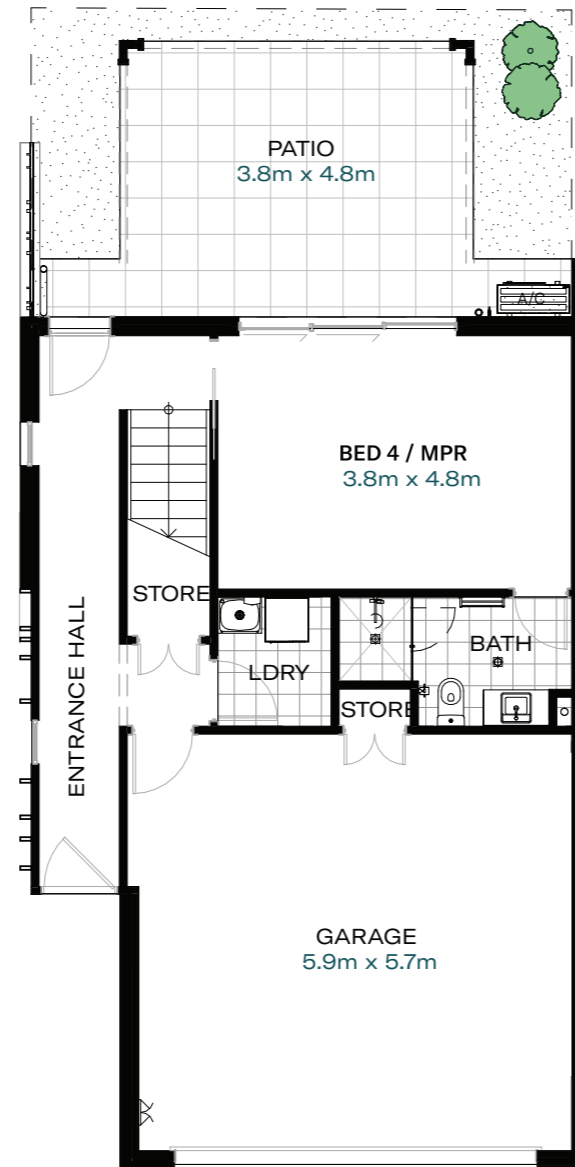
4 3.5 2

Internal Area	208m <sup>2</sup>
Patio / Deck Area	31m <sup>2</sup>
Garage Area	34m <sup>2</sup>
Total Area	273m <sup>2</sup>

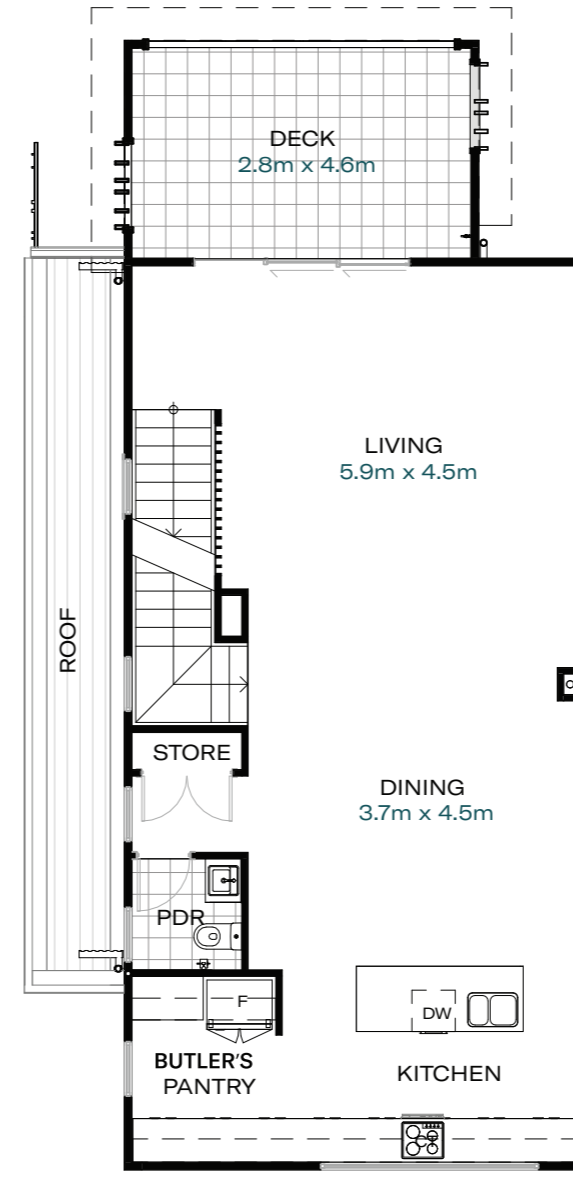
Outdoor Area ~13-34m<sup>2</sup>



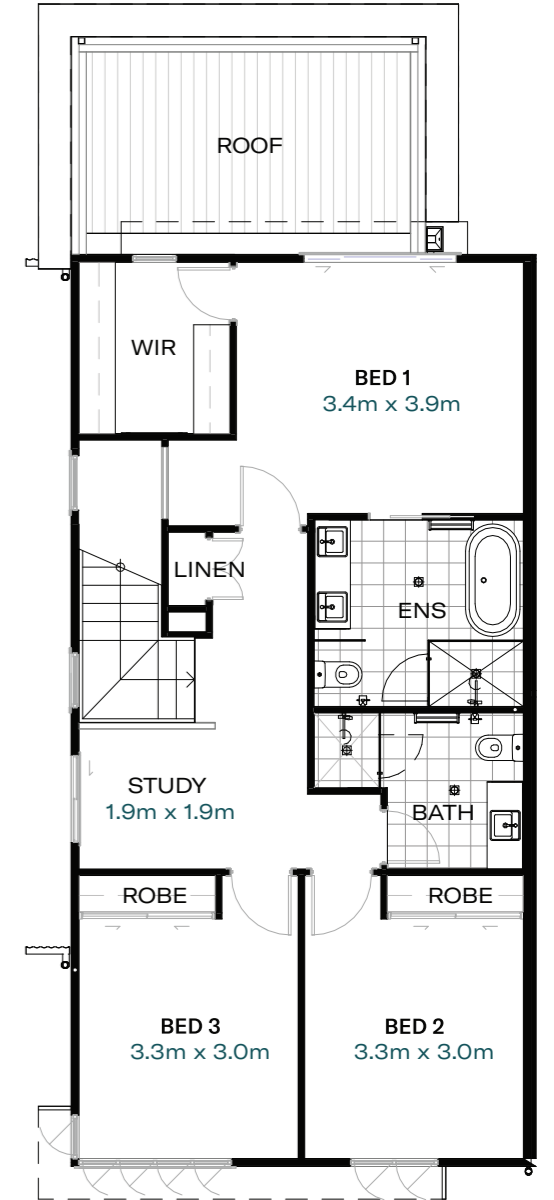
Greensill Road



Ground Floor



First Floor



Second Floor

These floorplans are a general representation only. Specific units of the same floorplan type, may contain variations in window configuration, courtyard size and layout, bin store location and roof form. Buyers are to make their own enquiries to understand specific unit inclusions by physical inspection and/or reference to contract documentation.



**Disclaimer:** This plan has been prepared prior to completion of construction and subject to final town planning approvals. Whilst every care has been taken to accurately represent the development intent, changes may be made without notice as a consequence of construction and approval outcomes (including, without limitation, to the layout, dimensions, specifications, service locations). All dimensions and areas are approximate only and subject to survey. Lots may also be subject to easements and covenants. Prospective buyers are to make their own enquiries as to the inclusions for specific lots, conduct a physical inspection where possible and refer to the contract plans and specifications, as the information in this document is provided for general guidance only and is not intended to be substitute for independent professional advice.

# PARQWAY

Albany Creek

## RESIDENCE TYPE 03

3 3.5

2 2

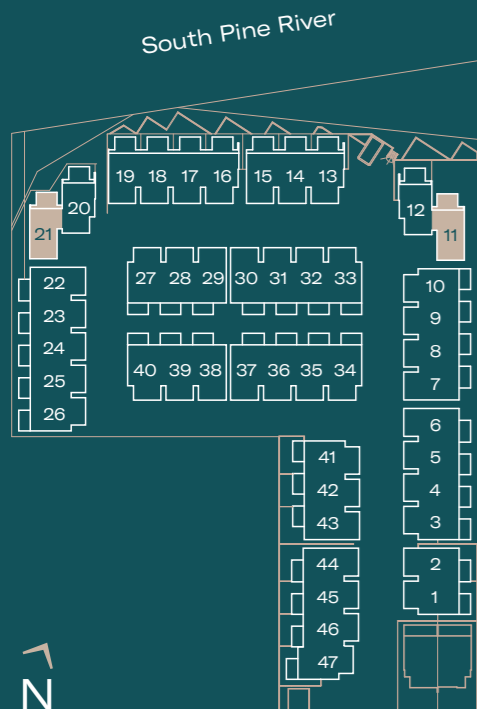
Internal Area 209m<sup>2</sup>

Patio / Deck Area 31m<sup>2</sup>

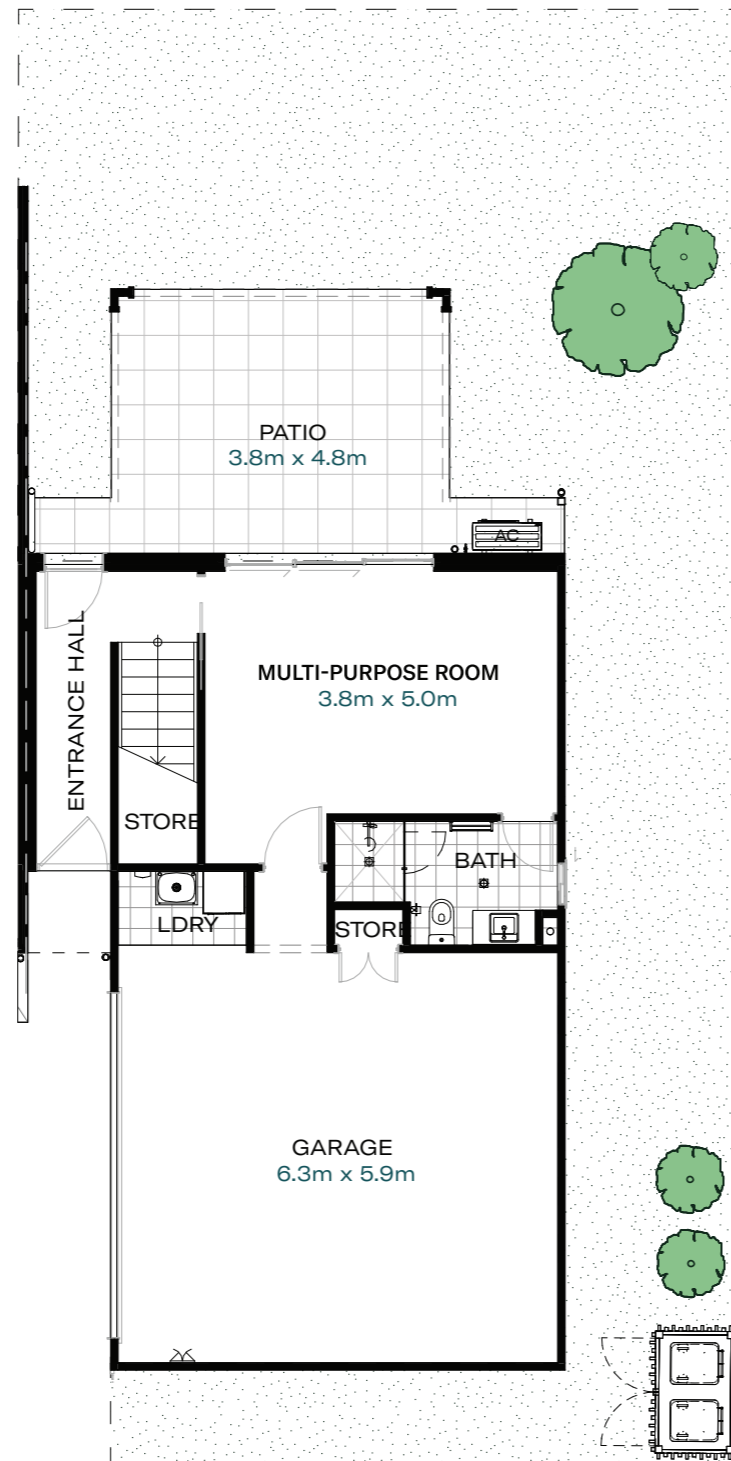
Garage Area 37m<sup>2</sup>

Total Area 277m<sup>2</sup>

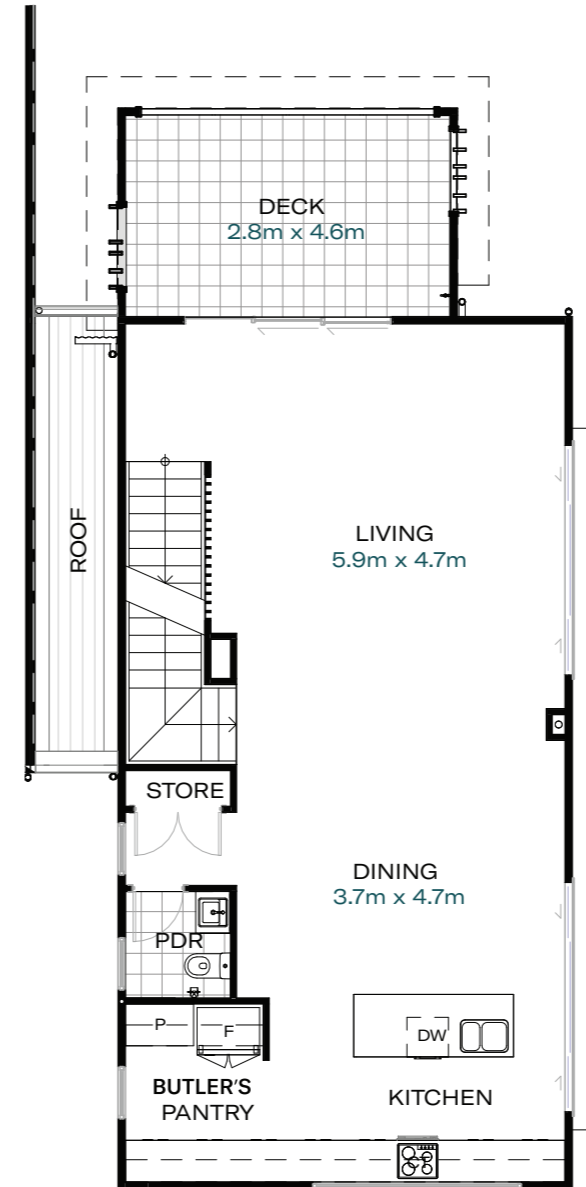
Outdoor Area ~148m<sup>2</sup>



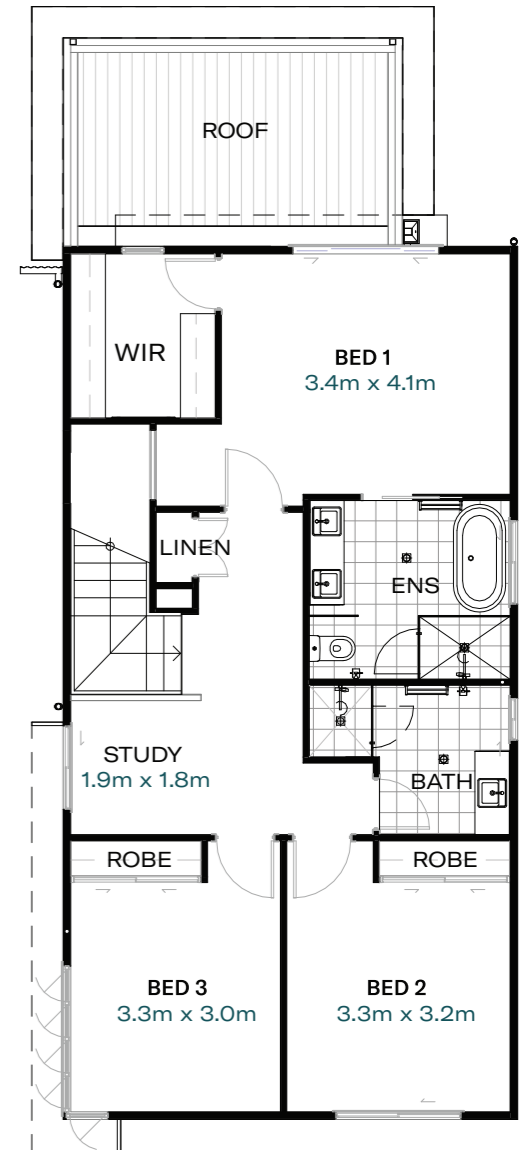
Greensill Road



Ground Floor

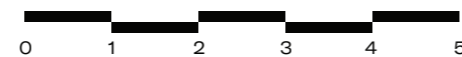


First Floor



Second Floor

These floorplans are a general representation only. Specific units of the same floorplan type, may contain variations in window configuration, courtyard size and layout, bin store location and roof form. Buyers are to make their own enquiries to understand specific unit inclusions by physical inspection and/or reference to contract documentation.



**Disclaimer:** This plan has been prepared prior to completion of construction and subject to final town planning approvals. Whilst every care has been taken to accurately represent the development intent, changes may be made without notice as a consequence of construction and approval outcomes (including, without limitation, to the layout, dimensions, specifications, service locations). All dimensions and areas are approximate only and subject to survey. Lots may also be subject to easements and covenants. Prospective buyers are to make their own enquiries as to the inclusions for specific lots, conduct a physical inspection where possible and refer to the contract plans and specifications, as the information in this document is provided for general guidance only and is not intended to be substitute for independent professional advice.